

## **At a Glance – Organisation**

The Directorate for the Rehabilitation of the Disabled was established by bifurcating the Directorate of Social Welfare in 1992 to deal exclusively with the Welfare of the Disabled. Subsequently, the Directorate was upgraded as the office of the State Commissioner for the Disabled in 1999 as per the provisions in the Persons with Disabilities Act, 1995.

The Government of Tamil Nadu through various policies and initiatives have extended full support to the Differently Abled Persons in their pursuit of full and equal involvement in every aspect of society. Various schemes have been announced by the Government to make sure that the differently abled persons are in equal status to the other people.

The State Policy for the Differently Abled Persons has been issued by the Government in 1994 taking into account of the latest developments in Science and Technology. This policy also provides for a mechanism for promotion and protection of the rights of Differently Abled Persons and methods for ensuring equal opportunities for their full participation in social life.

History is replete with instances of differently abled persons exhibiting exceptional and extraordinary skills. It is the responsibility of everybody in a civil society to play a vital role in creating an inclusive society where differently abled persons have equal opportunities and full participation in the growth and development of the country. A change of mind set and an approach with human touch towards the challenges faced by differently abled persons are the aims of this Government so that they lead a life of dignity and honour.

### **The thrust areas of Government are as follows:**

- ❖ Prevention of disabilities;
- ❖ Early detection and intervention;
- ❖ Rehabilitation measures;
- ❖ Providing Special Education;

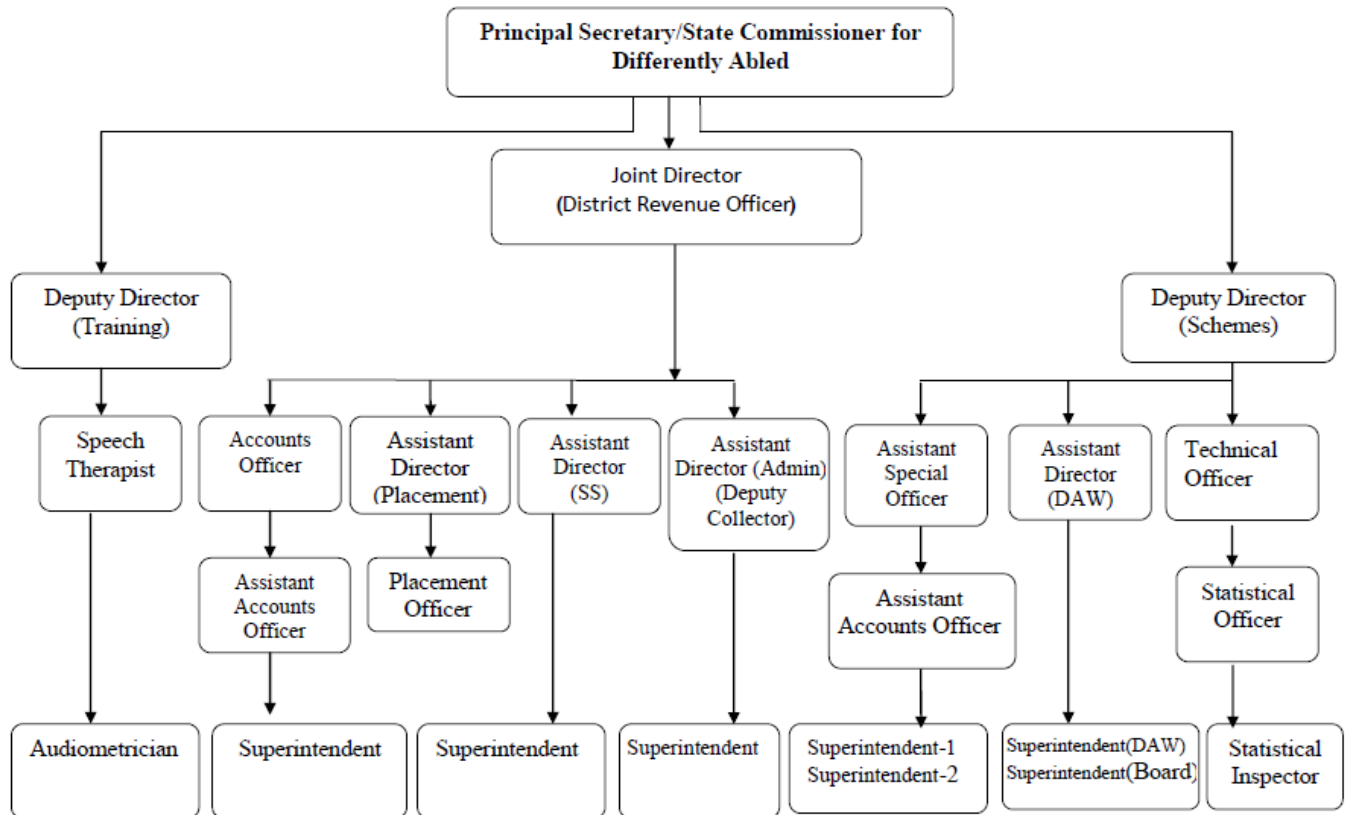
- ❖ Education and economic empowerment including self-employment;
- ❖ Development of professionals for rehabilitation;
- ❖ Provision of assistive devices;
- ❖ Creation of barrier free environment
- ❖ Social security.

**Strategies to achieve Thrust areas:**

- ❖ Creation of data base on differently abled persons.
- ❖ Creation of Infrastructure facilities (Barrier free Environment).
- ❖ Free and compulsory Primary Education.
- ❖ Vocational Training for employment in private sector and self employment
- ❖ Creation of Awareness

## ORGANISATION CHART

### a. Commissionerate for the Welfare of the Differently Abled



**b. District Differently Abled Welfare Office**

